

EXP-80.DWG

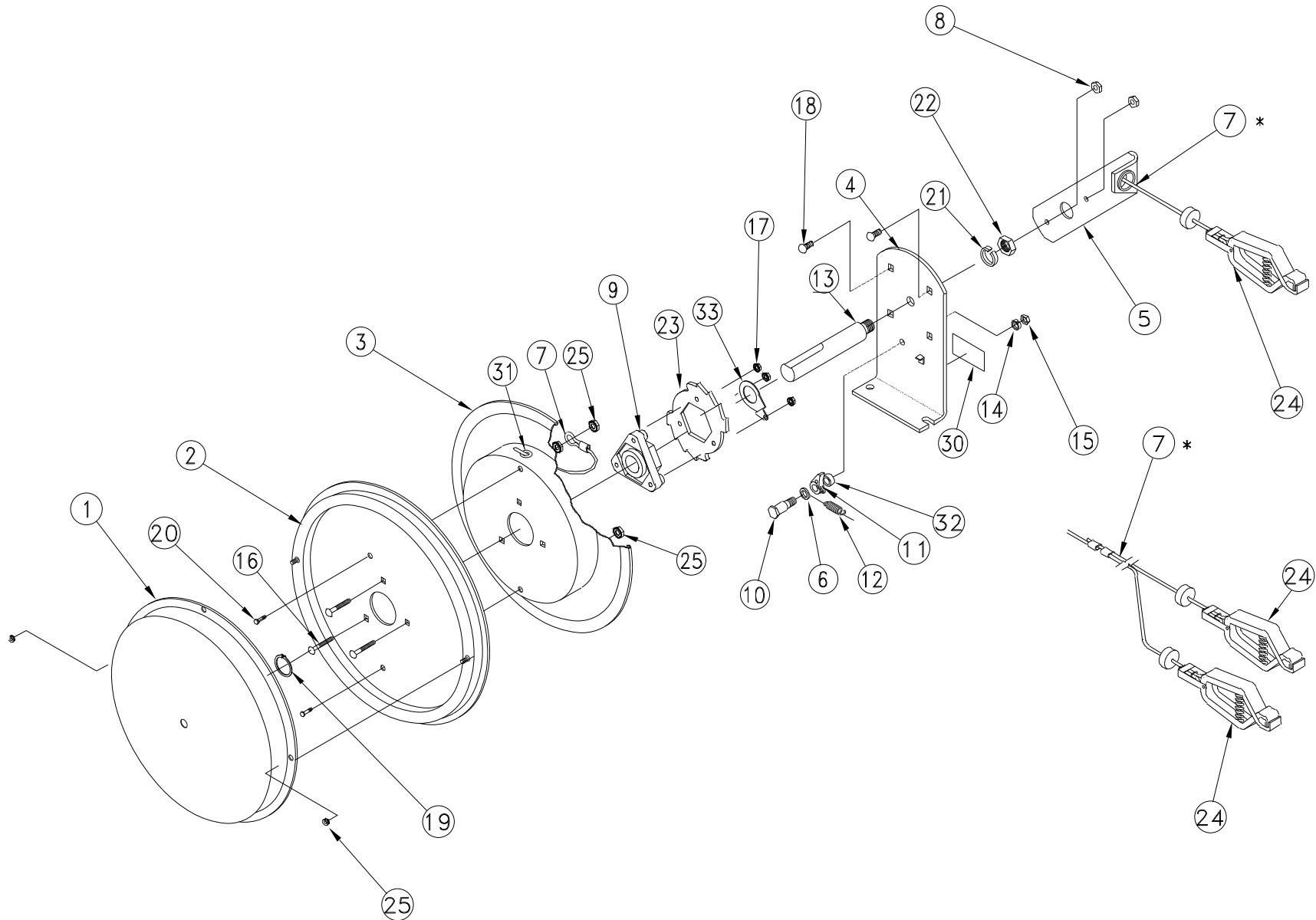
REVISION: T

ECO NO.: 1846-4

DRAWN BY: J. KNOSALLA

DATE: 4/24/02

COXREELS
SERIES SD



COMMON PARTS TO ALL STATIC DISCHARGE REELS SD MODELS

ITEM NO.	PART NO.	DESCRIPTION	QTY REQ'D
6	6441-1	WASHER, SPACER (050)	1
8	111-1	NUT, NYLON INSERT, 5/16-18	2
9	1776-3	ASSY., HUB BEARING	1
10	1620	BOLT, 1/2" X 11/16"	1
11	640-1-BR	CAM, LOCKING, BRASS	1
12	274-1-SS	SPRING, DOG	1
14	437	WASHER, LOCK, 3/8"	1
15	184	NUT, JAM, 3/8-16	1
16	1953	CARRIAGE BOLT, 1/4-20 x 1-1/2	3
17	125	NUT, KEPS, 1/4-20	3
18	10220-75	BOLT, CARRIAGE, 5/16-18 X 3/4"	2
19	206	RETAINING RING (5100-100)	1
20	6341	BOLT, 10-32 X 5/8"	2
21	438	WASHER, LOCK, 5/8"	1
22	3584	NUT, 5/8-11	1
23	1924	LOCKING RING	1
25	7050	NUT, LOCK, NYLON, 10-32	5
30	10925-5	LABEL	1
31	3879	GROMMET	1
32	6440-SS	WASHER, SPACER (286)	1
33	1797-SS	CONDUCTOR, GROUNDING	1

ITEM NUMBER

MODEL NO.	SPRING	DRUM	DRUM	BASE	ARM	CABLE ASSY. *	AXLE	CLAMP	
	1	2	3	4	5	7	13	24	QTY
SDL-35	7265-1	2201	2165	2130-2	2187-2	-	2139	-	-
SDL-50	7265	2201	2165	2130-2	2187-2	-	2139	-	-
SDL-75	7264-55	7230	7227	2130-1	2187-3	-	2139-2	-	-
SDL-100	7264-55	7230	7227	2130-1	2187-3	-	2139-2	-	-

SD-35	7265-1	2201	2165	2130-2	2187-2	2182-G-35	2139	2184	1
SD-50	7265	2201	2165	2130-2	2187-2	2182-G-50	2139	2184	1
SD-75	7264-55	7230	7227	2130-1	2187-3	2182-G-75	2139-2	2184	1
SD-100	7264-55	7230	7227	2130-1	2187-3	2182-G-100	2139-2	2184	1

SD-35-Y10	7265-1	2201	2165	2130-2	2187-2	2182-G-35-Y	2139	2184	2
SD-50-Y15	7264-55	7230	7227	2130-1	2187-3	2182-G-50-Y	2139-2	2184	2
SD-50-Y25	7264-55	7230	7227	2130-1	2187-3	2182-G-50-1-Y	2139-2	2184	2
SD-75-Y15	7264-55	7230	7227	2130-1	2187-3	2182-G-75-2-Y	2139-2	2184	2
SD-75-Y20	7264-55	7230	7227	2130-1	2187-3	2182-G-75-1-Y	2139-2	2184	2
SD-75-Y25	7264-55	7230	7227	2130-1	2187-3	2182-G-75-Y	2139-2	2184	2

ITEM NUMBER

MODEL NO.	SPRING	DRUM	DRUM	BASE	ARM	CABLE ASSY. *	AXLE	CLAMP	
	1	2	3	4	5	7	13	24	QTY
SD-35-1	7265-1	2201	2165	2130-2	2187-2	2182-SS-35	2139	2184	1
SD-50-1	7265	2201	2165	2130-2	2187-2	2182-SS-50	2139	2184	1
SD-75-1	7264-55	7230	7227	2130-1	2187-3	2182-SS-75	2139-2	2184	1
SD-100-1	7264-55	7230	7227	2130-1	2187-3	2182-SS-100	2139-2	2184	1

SD-35-1-Y10	7265-1	2201	2165	2130-2	2187-2	2182-SS-35-Y	2139	2184	2
SD-50-1-Y15	7264-55	7230	7227	2130-1	2187-3	2182-SS-50-Y	2139-2	2184	2
SD-50-1-Y25	7264-55	7230	7227	2130-1	2187-3	2182-SS-50-1-Y	2139-2	2184	2
SD-75-1-Y15	7264-55	7230	7227	2130-1	2187-3	2182-SS-75-2-Y	2139-2	2184	2
SD-75-1-Y20	7264-55	7230	7227	2130-1	2187-3	2182-SS-75-1-Y	2139-2	2184	2
SD-75-1-Y25	7264-55	7230	7227	2130-1	2187-3	2182-SS-75-Y	2139-2	2184	2

* CABLE ASSEMBLY SUPPLIED WITH BALL STOP AND COLLAR CLAMP.

REEL ASSEMBLY REPORTS:

- R100 LATCHOUT REMOVAL PROCEDURE
- R101 LOCKING RING PLACEMENT
- R112 TIGHTENING AND TORQUING