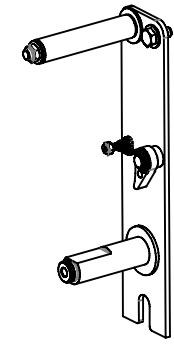


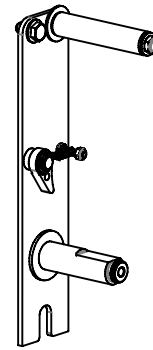
EXP-78EZ

REVISION: A
ECO NO.: 2371-11
BY: M. LLOYD
DATE: 1/04/07

COXREELS SERIES EZ-S 15

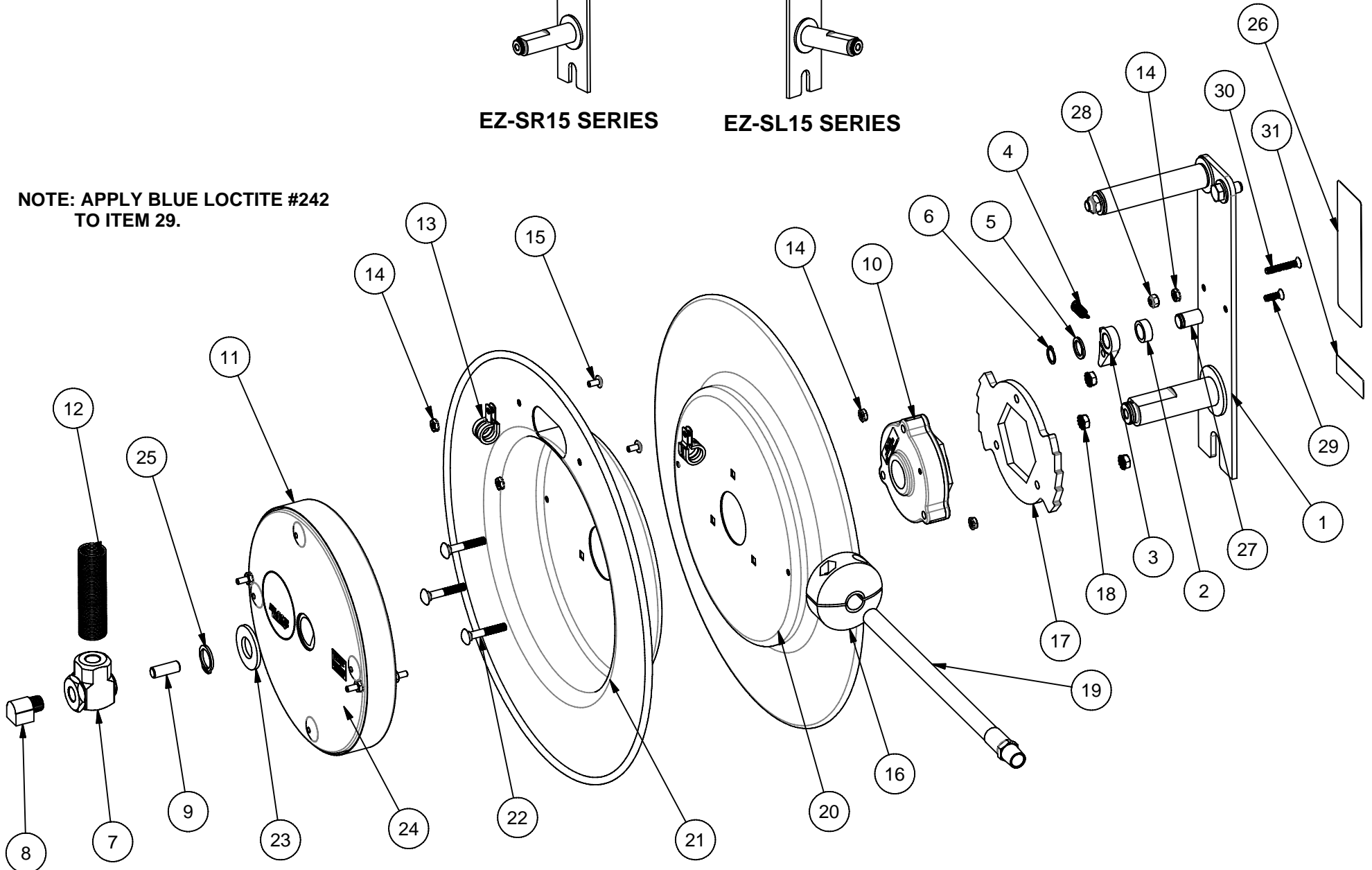


EZ-SR15 SERIES



EZ-SL15 SERIES

**NOTE: APPLY BLUE LOCTITE #242
TO ITEM 29.**



EZ-S 15" MODELS

DETAIL ITEM NO.	PART NO.	DESCRIPTION	EZ-SL15-L135	EZ-SR15-L135	EZ-SL15-L325	EZ-SR15-L325	EZ-SL15L-L135	EZ-SR15L-L135	EZ-SL15L-L325	EZ-SR15L-L325
1	8540-R	ASSEMBLY, 15" SIDE MOUNT BRACKET	-	1	-	1	-	1	-	1
	8540-L	ASSEMBLY, 15" SIDE MOUNT BRACKET	1	-	1	-	1	-	1	-
2	6440-SS	SPACER, SS	1	1	1	1	1	1	1	1
3	640-1-SS	CAM, LOCKING	1	1	1	1	1	1	1	1
4	274-1-SS	SPRING	1	1	1	1	1	1	1	1
5	6441-1	WASHER, SPACER	1	1	1	1	1	1	1	1
6	6326	RING, RETAINING	1	1	1	1	1	1	1	1
7	1935	SWIVEL, 3/8"	-	-	1	1	-	-	1	1
	1969	SWIVEL, 1/4"	1	1	-	-	1	1	-	-
8	6088	ELBOW, 90 DEG. 1/4"	1	1	-	-	1	1	-	-
9	10235-SS	STUD, 3/8-16 X 1" SS	1	1	1	1	1	1	1	1
10	7474-3-R	ASSY., EZ-COIL DAMPER	-	1	-	1	-	1	-	1
	7474-3-L	ASSY., EZ-COIL DAMPER	1	-	1	-	1	-	1	-
11	1958-2	ASSY., SPRING CAN, 8"	-	1	-	-	-	1	-	-
	1958-2R	ASSY., SPRING CAN, 8" REVERSE	1	-	-	-	1	-	-	-
	1958-3	ASSY., SPRING CAN, 8"	-	-	-	1	-	-	-	1
	1958-3R	ASSY., SPRING CAN, 8" REVERSE	-	-	1	-	-	-	1	-
12	237-1	GUARD, HOSE, 1/4" - 3/8"	1	1	1	1	-	-	-	-
13	381	CLAMP, #10	-	-	2	2	-	-	2	2
	2169	CLAMP, #8	2	2	-	-	2	2	-	-
14	130	NUT, #10-32 KEPS	5	5	5	5	5	5	5	5
15	245	SCREW, #10-32 X 3/8"	2	2	2	2	2	2	2	2
16	131-3	BALL STOP, 3/8"	-	-	1	1	-	-	-	-
	131	BALL STOP, 1/4"	1	1	-	-	-	-	-	-
17	1924	LOCKING RING	1	1	1	1	1	1	1	1
18	125	NUT, 1/4-20 KEPS	3	3	3	3	3	3	3	3
19	5153-25	HOSE ASSEMBLY, 3/8" X 25'	-	-	1	1	-	-	-	-
	5150-35	HOSE ASSEMBLY, 1/4" X 35'	1	1	-	-	-	-	-	-
20	189-1	DISK, 15" X 1"	1	1	1	1	1	1	1	1
21	190-1	DISK, 15" X 2" W/ SLOT	1	1	1	1	1	1	1	1
22	1953	BOLT: 1/4-20 X 1-1/2" CARRIAGE	3	3	3	3	3	3	3	3
23	1755-1	WASHER, SPACER	1	1	1	1	1	1	1	1
24	10937	LABEL, EZ-COIL	1	1	1	1	1	1	1	1
25	1753	RING, RETAINING	1	1	1	1	1	1	1	1
26	10925-5B	LABEL, ID, EZ-COIL, STD.	1	1	1	1	1	1	1	1
27	8423	PIN, LOCKING CAM	1	1	1	1	1	1	1	1
28	7050	NUT, #10-32 NYLOCK	1	1	1	1	1	1	1	1
29	8427	SCREW, #10-32 X 5/8" FLAT HEAD	1	1	1	1	1	1	1	1
30	8428	SCREW, #10-32 X 1-1/4" FLAT HEAD	1	1	1	1	1	1	1	1
31	10937-1	LABEL: EZ-COIL, PATENT NO.	1	1	1	1	1	1	1	1

NOTE 1: FOR MODELS WITH **-SB (STEEL BRAID HOSE) OPTION**. USE #5210-35 (ITEM 19) AND 115 (ITEM 13).

NOTE 2: FOR MODELS WITH **-YXC (CONSTANT TENSION) OPTION**. OMIT ITEMS #2, 3, 4, 5, 6, 14 (QTY 1), 17, 27, 28, 29, AND 30.
USE #170-1-125 BOLTS IN PLACE OF ITEM #22.

REVISION: A

ECO: 2371-11

DATE: 1/4/2007

NAME: M. LLOYD