

EXP-50.DWG

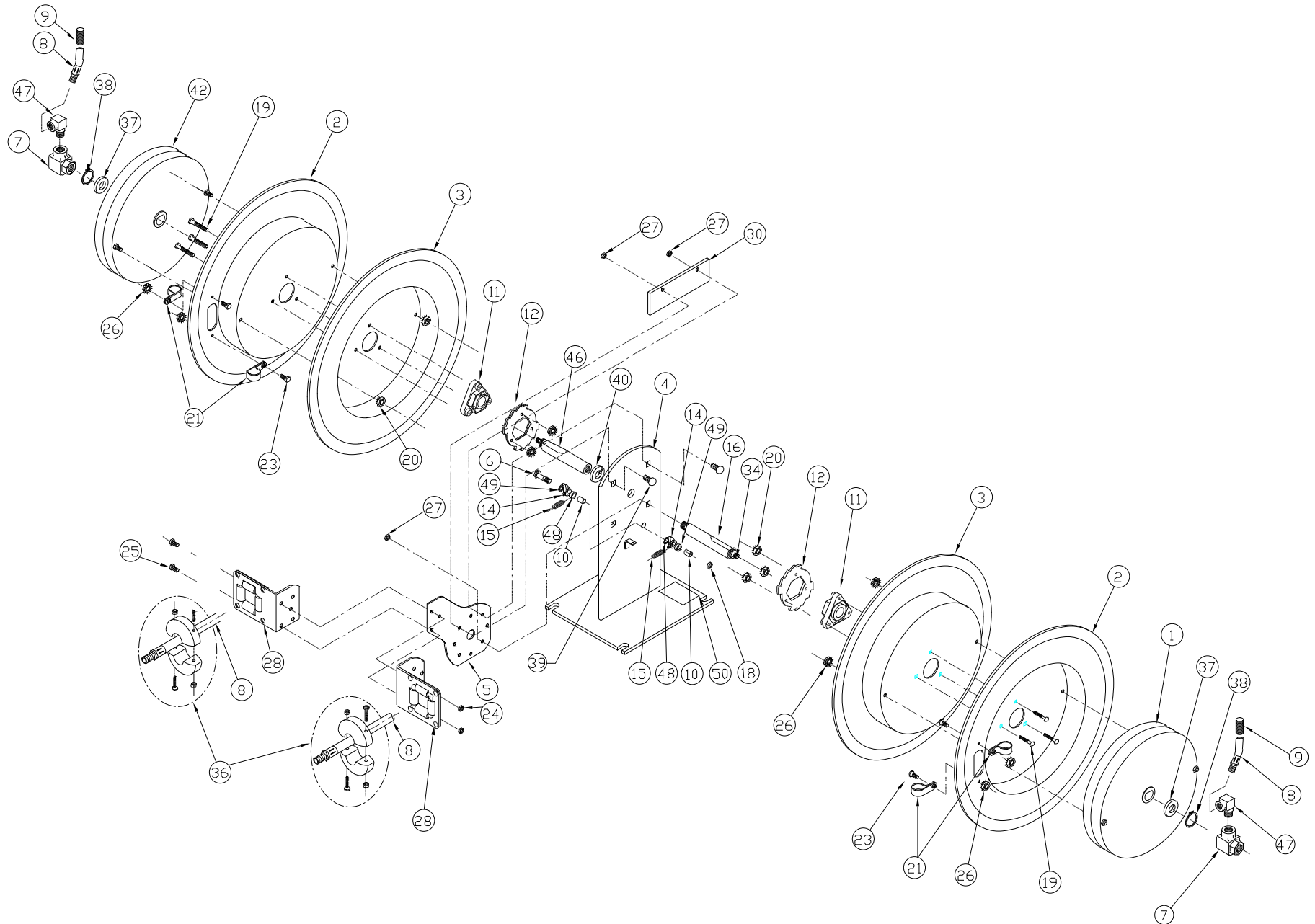
REVISION: Q

ECO NO.: 1809-10

DRAWN BY: J. KNOSALLA

DATE: 01/09/02

COXREELS
SERIES C



ITEM NO.	PART NO.	DESCRIPTION	QTY REQ'D
6	1985	BOLT, 3/8-16NC x 2.5 LG, GR. 5	1
10	6403-SS	BUSHING, STAINLESS	2
11	1776-3	ASSY, HUB BEARING	2
12	1924	LOCKING RING	2
14	640-1-C-SS	CAM, LOCKING	2
15	274-1-SS	SPRING, DOG	2
18	435-1	NUT, LOCKING, 3/8-16	1
19	1953	CARRIAGE BOLT, 1/4-20 NC x 1.5	6
20	125	NUT, KEPS, 1/4-20	6
23	245	BOLT, 10-32 x 3/8"	4
24	111	NUT, LOCK, 5/16-18	3
25	312	BOLT, 5/16-18 x 3/4"	3

ITEM NO.	PART NO.	DESCRIPTION	QTY REQ'D
26	130	NUT, KEPS, 10-32	8
27	111-1	NUT, LOCK, 5/16-18, LOW PROFILE	4
28	1728-3	ASSY, ROLLER BRACKET	2
30	1975	KEEPER, AXLE	1
34	10235-SS	SETSCREW, 3/8-16x7/8 CUP PT-SS	2
37	1755-1	WASHER, SPACER	2
38	1753	RETAINING RING (5160-75)	2
39	10220-75	BOLT, CARRIAGE, 5/16-18 x 3/4"	4
40	438	WASHER, LOCK, 5/8"	1
48	6440-SS	WASHER, SPACER	2
49	6441-1	WASHER, SPACER	2
50	10925-5	LABEL	1

ITEM NUMBER

MODEL NO.	1	2	3	4	5	7	* 8	* 8	* 8	* 9	16	21	* 36	42	46	47
	SPRING	(2) DRUMS	(2) DRUMS	BASE	ARM	(2)SWIVELS	(2) HOSES (STD)	(2) HOSES (-OG)	(2) HOSES (-RH)	(2) GUARDS	AXLE	(4) CLAMPS	(2) BALL ST.	SPRING	AXLE	(2) ELBOWS
C-LP-125-125	689-3	1948	1947	1979	1976	1969	5150-25	5121-25	3870-25	237-1	1956	2169	131	689-3R	1956-1	-
C-LP-135-135	689-3	1948	1947	1979	1976	1969	5150-35	5121-35	3870-35	237-1	1956	2169	131	689-3R	1956-1	-
C-LP-150-150	689-5	1948	1947	1979	1976	1969	5150-50	5121-50	3870-50	237-1	1956	2169	131	689-5R	1956-1	-
C-LP-325-325	689-3	1948	1947	1979	1976	1935	5153-25	5101-25	5045-25	237-1	1956	381	131-3	689-3R	1956-1	-
C-LP-335-335	689-3	1948	1947	1979	1976	1935	5153-35	5101-35	5045-35	237-1	1956	381	131-3	689-3R	1956-1	-
C-LP-350-350	1961-7	1948	1947	1979	1976	1935	5153-50	5101-50	5045-50	237-1	1956	381	131-3	1961-7R	1956-1	-
C-LP-425-425	689-3	1948	1947	1979	1976	439	5154-25	5131-25	5066-25	398-1	1956	383	131-4	689-3R	1956-1	-

ITEM NUMBER

MODEL NO.	1	2	3	4	5	7	* 8	ITEM NUMBER		* 9	16	21	* 36	42	46	47
	SPRING	(2) DRUMS	(2) DRUMS	BASE	ARM	(2)SWIVELS	(2) HOSES (STD)	(2) GUARDS	AXLE	(4) CLAMPS	(2) BALL ST.	SPRING	AXLE	(2) ELBOWS		
C-MP-325-325	2037-3	1948	1947	1979	1976	1935	5224-25			237-1	1956	381	131-3	2037-3R	1956-1	500
C-MP-335-335	2037-1	1948	1947	1979	1976	1935	5224-35			237-1	1956	381	131-3	2037-1R	1956-1	500
C-MP-425-425	2037-3	1948	1947	1979	1976	439	5256-25			398-1	1956	383	131-4	2037-3R	1956-1	1671
C-MP-430-430	2037-2	1948	1947	1979	1976	439	5256-30			398-1	1956	383	131-4	2037-2R	1956-1	1671

ITEM NUMBER

MODEL NO.	1	2	3	4	5	7	* 8	ITEM NUMBER		* 9	16	21	* 36	42	46	47
	SPRING	(2) DRUMS	(2) DRUMS	BASE	ARM	(2)SWIVELS	(2) HOSES (STD)	(2) GUARDS	AXLE	(4) CLAMPS	(2) BALL ST.	SPRING	AXLE	(2) ELBOWS		
C-HP-125-125	2037-3	1948	1947	1979	1976	499	5304-25			237-1	1956	115	131-3	2037-3R	1956-1	616
C-HP-135-135	2037-1	1948	1947	1979	1976	499	5304-35			237-1	1956	115	131-3	2037-1R	1956-1	616
C-HP-325-325	2037-3	1948	1947	1979	1976	521	5336-25			237-1	1956	613	131-3	2037-3R	1956-1	617
C-HP-330-330	2037-2	1948	1947	1979	1976	521	5336-30			237-1	1956	613	131-3	2037-2R	1956-1	617

* ON "LESS HOSE" MODELS (C-LPL-/C-MPL-/C-HPL-) EXCLUDE ITEMS #8, #9, AND #36.

NOTE: MODELS SUPPLIED WITH "STANDARD" HOSE UNLESS SUFFIXED WITH "-OG" OR "-RH". USE HOSE NUMBERS AS NOTED ABOVE.

REEL ASSEMBLY REPORTS R100 (LATCHOUT REMOVAL), R101 (LOCKING RING PLACEMENT), R112 (TIGHTENING AND TORQUING)

REVISION: Q

ECO: 1809-10

DATE:

1/9/02

NAME: J. KNOSALLA