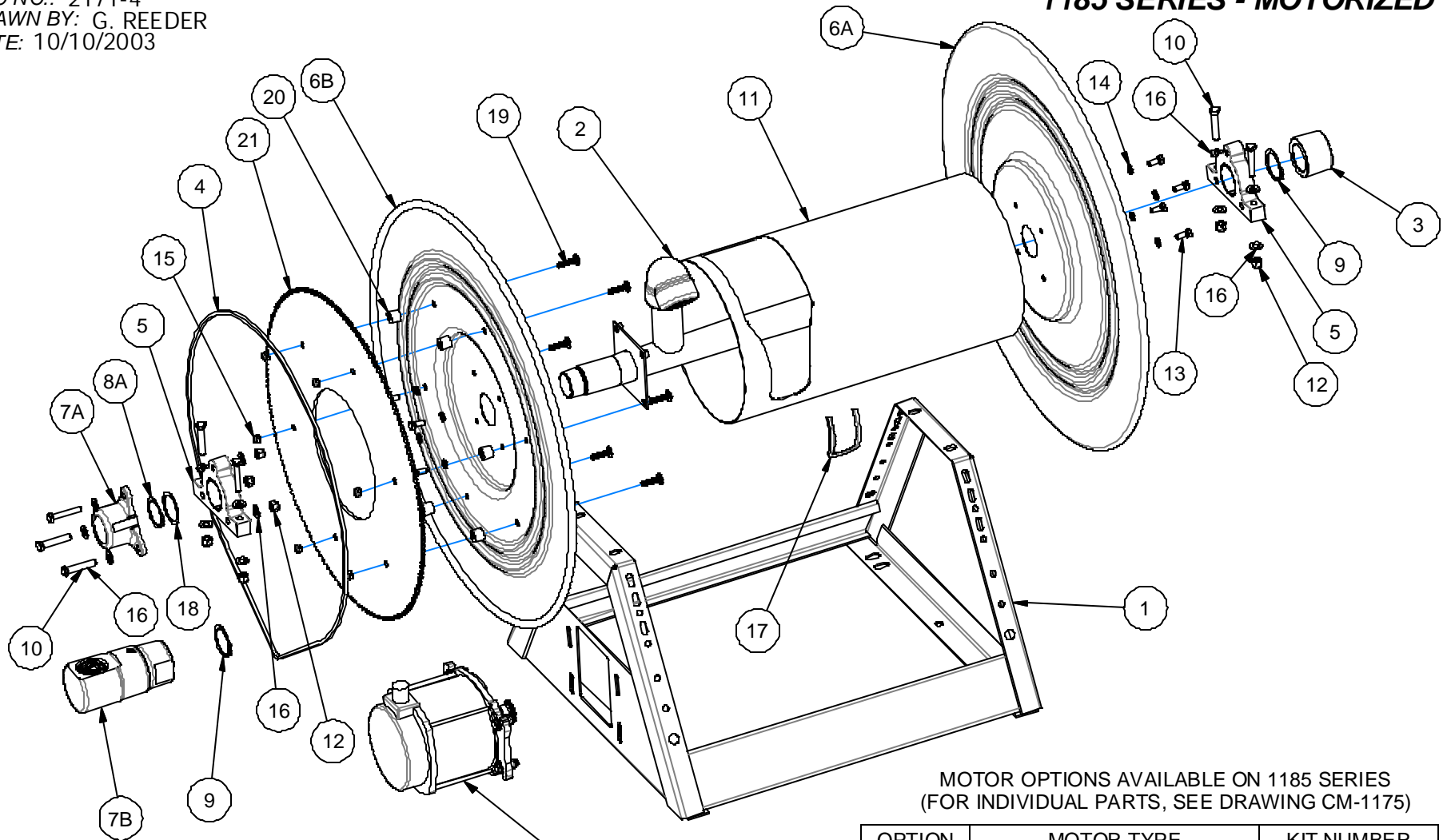


# EXP 215

REVISION: C  
 ECO NO.: 2171-4  
 DRAWN BY: G. REEDER  
 DATE: 10/10/2003

# COXREELS 1185 SERIES - MOTORIZED



MOTOR OPTIONS AVAILABLE ON 1185 SERIES  
 (FOR INDIVIDUAL PARTS, SEE DRAWING CM-1175)

OPTION	MOTOR TYPE	KIT NUMBER
-A	AIR - #4	CM-1175-A
-AB	AIR - #6	CM-1175-AB
-EA	115V-AC, EXP. PROOF (1/2HP)	CM-1175-EA
-EB	24 V-DC, EXP. PROOF (1/2HP)	CM-1175-EB
-ED	12 V-DC, EXP. PROOF (1/2HP)	CM-1175-ED
-E	12 V-DC (1/3HP)	CM-1175-E
-H	HYDRAULIC	CM-1175-H

FOR BAND BRAKE, KIT #8302, USE OPTION "K"  
 FOR BEVEL GEAR CRANK, KIT #8195, USE OPTION "-C"

COMMON PARTS TO ALL 1185 REELS W/ MOTOR

ITEM NO.	PART NO.	DESCRIPTION	QUANTITY REQUIRED							
			1185-2020-X	1185-1124-X	1185-1524-X	1185-2024-X	1185-3324-X	1185-2028-X	1185-2528-X	1185-3328-X
1	8143-2020	FRAME, 20"	1							
	8143-1124	FRAME, 24"		1						
	8143-1524	FRAME, 24"			1					
	8143-2024	FRAME, 24"				1				
	8143-3324	FRAME, 24"					1			
	8143-2028	FRAME, 28"						1		
	8143-2528	FRAME, 28"							1	
2	8143-3328	FRAME, 28"								1
	8169-11.5	AXLE ASSEM, INLINE *		1						
	8169-15.5	AXLE ASSEM, INLINE *			1					
	8169-20	AXLE ASSEM, INLINE *	1			1		1		
	8169-25	AXLE ASSEM, INLINE *							1	
	8169-33	AXLE ASSEM, INLINE *					1			1
	8164-11.5	AXLE ASSEM, 90° SWV **		1						
	8164-15.5	AXLE ASSEM, 90° SWV **			1					
3	8164-20	AXLE ASSEM, 90° SWV **	1			1		1		
	8164-25	AXLE ASSEM, 90° SWV **							1	
	8164-33	AXLE ASSEM, 90° SWV **					1			1
	7624	PIPE CAP, 1 1/2"	1	1	1	1	1	1	1	1
4	20396	CHAIN ASSEMBLY	1							
	20397	CHAIN ASSEMBLY		1	1	1	1			
	20398	CHAIN ASSEMBLY						1	1	1
5	8166	BEARING ASSEMBLY	2	2	2	2	2	2	2	2
	7799	DISC, 20"	1							
6A	7603-1	DISC, 24"		1	1	1	1			
	7627-1	DISC, 28"						1	1	1
6B	7799-1	DISC, 20"	1							
	7603	DISC, 24"		1	1	1	1			
	7627	DISC, 28"						1	1	1
7A	20288	SWIVEL, 1 1/2", INLINE *	1	1	1	1	1	1	1	1
7B	20253-1	SWIVEL, 1 1/2", 90° **	1	1	1	1	1	1	1	1
8A	20266	RETAINING RING *	1	1	1	1	1	1	1	1
8B	20252	RETAINING RING **	1	1	1	1	1	1	1	1
9	20252	RETAINING RING	1	1	1	1	1	1	1	1
10	7696	BOLT, 3/8-16 x 2" ***	7	7	7	7	7	7	7	7
11	7604-11.5	DRUM, CENTER		1						
	7604-15.5	DRUM, CENTER			1					
	7604-20	DRUM, CENTER	1			1		1		
	7604-25	DRUM, CENTER							1	
	7604-33	DRUM, CENTER					1			1
12	435	LOCKNUT, 3/8" ***	7	7	7	7	7	7	7	7
13	312	BOLT, 5/16-18 x 3/4	8	8	8	8	8	8	8	8
14	112	LOCKWASHER, 5/16	8	8	8	8	8	8	8	8
15	111	LOCKNUT, 5/16-18	6	6	6	6	6	6	6	6
16	157	WASHER, FLAT, 3/8	14	14	14	14	14	14	14	14
17	7460-14	TRIM, DRUM EDGE	1	1	1	1	1	1	1	1
18	20264	WASHER, BEARING *	1	1	1	1	1	1	1	1
19	20668	BOLT, 5/16-18 x 1 1/4	6	6	6	6	6	6	6	6
20	16017-1	SPACER	6	6	6	6	6	6	6	6
21	20394-1	SPROCKET, 122 TOOTH	1							
	20502-15	SPROCKET, 138 TOOTH		1	1	1	1			
	20500-15	SPROCKET, 180 TOOTH						1	1	1

\* ONLY SUPPLIED WITH STATIONARY SWIVEL ON STANDARD MODELS.  
 \*\* ONLY SUPPLIED WITH EXTERNAL 90° SWIVEL MODELS (ADD :-B UXX\* SUFFIX TO MODEL NO.).  
 \*\*\* QUANTITY IS 4 WITH EXTERNAL 90° SWIVEL.

REVISION: C DATE: 6/10/2005  
 ECO: 2171-4 NAME: M. LLOYD